

**Ketchikan**  
**BOAT and CANOE CO.**



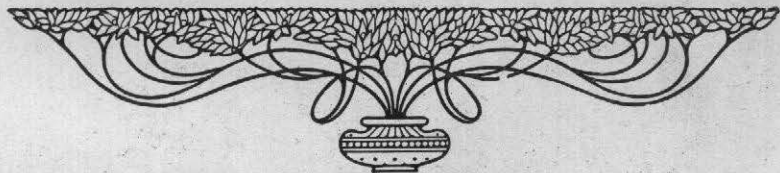
WATERVILLE  
MAINE

K E N N E B E C

BOAT & CANOE COMPANY

---

WATERVILLE, MAINE, U. S. A.



1 9 1 0



Kennebec Boat & Canoe Co.'s Factory, Side View. In this building the first Kennebec canoes were manufactured. The machinery used in building our boats and canoes is located in this building, which contains about 20,000 square feet of floor space.

# INTRODUCTION



IN presenting to you our 1910 catalog it is not our intention to go into all the minute details of the construction of each boat and canoe, and the preparation of each rib, plank, rail, seat, thwart, and deck. We do, however, desire to tell you in a general way a few of the reasons why it will be to your interest to give careful consideration to KENNEBEC boats and canoes before placing an order.

## CANOE CONSTRUCTION

MODELS.—Perhaps first of all, and above all, the most important thing to be considered in the manufacture of canoes is the model. The KENNEBEC BOAT & CANOE CO. has taken great care and pains in the selection of models, and without regard to expense every effort has been made to produce the very best designs in each model. We make no canoe that would not make a grand craft for all-round service, but by paying careful attention to the different conditions under which canoes are used, we have designed models that are especially adapted to these conditions, as will be described in the pages of this catalog. For beautiful lines, and the graceful appearance they present in the water, the various models of KENNEBEC canoes are unsurpassed, and the careful selection of materials and skilful workmanship used in their construction serve to give the happy combination of beauty and strength. Our canoes represent the up to date ideas of up to date men who have had long experience in this kind of work.

**MATERIALS.**—No canoe manufacturer in the country is better located with a view to easy and quick access to the very highest grades of materials than the KENNEBEC BOAT & CANOE CO. Many millions of feet of cedar are annually brought down the Kennebec River, and by having only men of long experience in canoe building make careful attention of our stock, we are able to secure a quality of material unsurpassed if not unequalled by that used by any canoe manufacturer in the country, and no pains or expense are spared in securing lumber that will give our canoes the greatest strength and at the same time make them light in weight. Every possible consideration is given to the durability, strength, and weight of the materials used in the construction of KENNEBEC canoes, and these are points of great importance to be considered by the prospective purchaser.

**WORKMANSHIP.**—After the selection of the proper stock to be used in the construction of a canoe, it is of the utmost importance that this stock should be properly worked up into the various forms in which it is used, by men of intelligence, and who have had large experience in this line of work, and no canoe manufacturer has the advantage of having men in this department who have had better experience, or possess better judgment than those employed by the KENNEBEC BOAT & CANOE CO. Every possible attention is paid to the minutest details of the work, and no matter how small or seemingly unimportant a part may be, it is given the same careful attention that characterizes all our work.

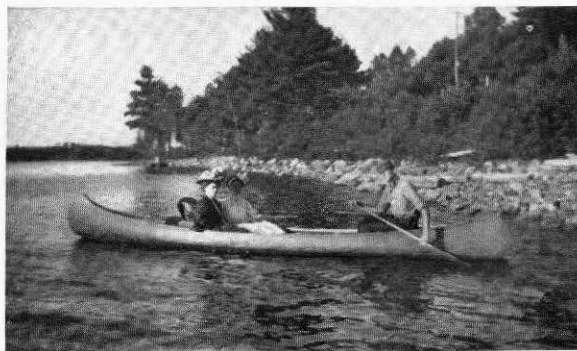
**RIBS.**—The ribs used in the construction of all KENNEBEC canoes are selected from the very best quality of Maine cedar. They are steamed and bent over solid moulds, and securely fastened to the inwales. These ribs are 5-16 inch thick,  $2\frac{1}{2}$  inches wide, and spaced  $1\frac{1}{4}$  inches apart, giving a foundation of great stability, while careful moulding gives them a neat appearance.

**WALES.**—The inwales on all our canoes are selected from the best quality of clear spruce, and run the entire length of the canoe. The outside wales are of spruce or mahogany, according to the type ordered.

**PLANKING.**— The most careful attention is paid to the selection of stock to be used in planking KENNEBEC canoes, and with our easy facilities for securing the best quality of cedar obtainable, we are able to produce an A1 grade of planking. This planking is 3-16 inch thick, and securely fastened to each rib with brass tacks which are clinched on the inside of the ribs. This method of fastening the planking insures great strength and rigidity.

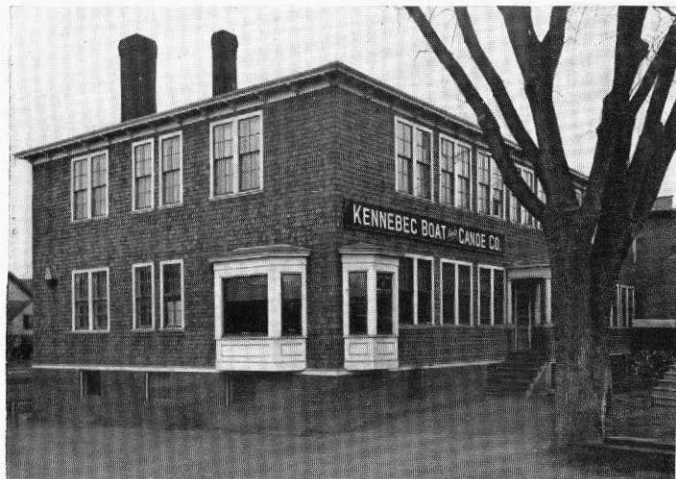
**DECKS.**— We are fully equipped to turn out decks of almost any kind of wood and in any length. In our Maine Guides' model we use 15 inch cedar decks, unless otherwise specified, and in our Kennebec, Kineo, and Charles River "1915" models regular, we use 15 inch maple or ash decks. Our mahogany decks are highly polished and present a beautiful appearance. The different materials and lengths of decks we can furnish are noted in our descriptions of the various types.

**CANVAS.**— In all the detail of the construction of a canoe there is nothing of greater importance than the covering, as the durability of the canoe depends in a large measure on the quality of the material used, and the manner in which it is filled and painted. These two latter points will be mentioned in paragraphs following. The canvas used for covering our canoes is cotton duck manufactured specially for this kind of work. This canvas is so thoroughly constructed and closely woven that it possesses great strength, and with our method of filling makes a covering that is wellnigh indestructible. This canvas is put on the canoes full width, tightly stretched over the planking, and securely fastened to the stems and



wales with brass tacks. On our Maine Guides' model, canoes which are likely to have the roughest usage, we use Number 8 duck, and on our other canoes we use Number 10 duck, which is very strong, but a little lighter weight.

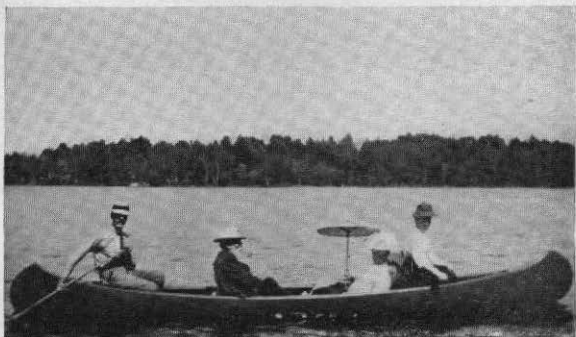
**STEMS.**— The inside stems used in our canoes are carefully selected with a view to securing the greatest strength with the least weight. Outside stems, when ordered, are furnished in oak.



**SEATS and THWARTS.**— The seats and thwarts used in all models of KENNEBEC canoes are of ash, maple, or mahogany, and are designed so as to present a very neat appearance. The seats are filled with an extra good quality of cane, and neatly woven by experienced hands.

**FILLER.**— In a preceding paragraph we have mentioned the importance of the covering and the manner in which it is treated to insure the life of the canoe, and after selecting the very best quality of duck for the covering, we spare no labor or pains to secure the best filler and paints obtainable, and use great care in their application.

The materials used in filling the canvas on our canoes are of the best quality, and the fillers are prepared by secret processes of our own which long experience has proved to be the superior of anything ever used. To illustrate the careful and thorough manner in which this work is done we will state that in finishing our canoes we use three coats of filler, two of color, and two of varnish. After the canvas has been stretched on the canoe the first coat of filler is put on and thoroughly rubbed in, and the canoe laid aside for four weeks to give it ample time to become thoroughly dry and hardened. Then the canoe is sandpapered, and second coat of filler put on and thoroughly rubbed in, and the canoe laid aside for two weeks to allow it to become dry and hardened. Then the canoe is again sandpapered and a third coat of filler applied and thoroughly rubbed in, and the canoe laid aside for another week, after which it is ready to be again sandpapered and put into condition for the first coat of color.



**PAINTS and VARNISHES.**—When the canvas covering is in proper condition the first coat of color is put on and allowed to dry thoroughly, after which the surface is carefully rubbed and a second coat of color applied. When this second coat of color has become thoroughly dry it is carefully rubbed, and a coat of special rub varnish applied, and last of all, the application of a high grade of spar varnish gives the canoe a beautiful finish and appearance. The paints and varnishes used on KENNEBEC canoes are of the best quality obtainable, and are especially adapted to this class of work. The canoe is thoroughly oiled outside before the canvas is put on, and the inside is oiled, shellaced, and varnished, so that no amount of dampness can in any way reach or affect the wood.

**COLORS.**— In our Kennebec, Kineo, Charles River "1915" models we intend to carry a stock in light red, dark red, brilliant green, light green, medium green, dark green, gray and dark blue, while we can furnish on short notice light blue, medium blue, olive, yellow, brown, amber, sage green, and wine color. These, as will be seen on our color card, which we will be pleased to send to any one interested, give a great variety of shades to select from. If, however, a customer desires some other shade, and will send us the material, we will be glad to put it on without extra charge. We can also furnish any canoe white for \$1.75 additional.

**KEELS.**— Experience has taught that birch furnishes a most satisfactory keel, and this is material we use unless otherwise ordered. Our regular keel is seven eighths inch deep, but other sizes can be furnished if desired. We recommend the use of a keel on pleasure boats, as they have a tendency to increase their steadiness, and to protect the varnish and paint on the bottoms when drawing the canoes out of the water onto wharves. A keel on any canoe will aid in keeping from drifting when going against a strong wind.



**OPEN GUNWALES.**— We are fully equipped to put open gunwales on any of our canoes at an average additional expense of about \$4.50. These are put on in a neat and attractive manner, and do not give the canoe a clumsy appearance, as is the case with some styles. When a canoe is likely to be used under conditions where it will become soiled inside, so it is necessary to wash it out, open gunwales are very desirable, as the canoe can be turned over, and all the water will run out between the wales.

**SPECIAL HEAVY OUTWALES.**— A very attractive

appearance is given a canoe by using special heavy mahogany outwales, and these can be furnished on our types 3A, 4A, 5A, and 6A for \$2 additional.

**SPONSONS.**— The sponsons with which we equip our canoes, when desired, are of a special design, and make it practically impossible to tip a canoe over in the water, or sink it. These sponsons are specially adapted to our Kennebec and Charles River "1915" models, but can be easily put on the other models if desired. These sponsons are so constructed as to become a part of the canoe, and do not tend to give it an unfinished appearance, as would be the case with one less artistically constructed.



The charge for putting sponsons on any canoe is \$11.50.

**PADDLES.**— We carry at all times a full line of paddles in maple, ash, and spruce, and in lengths 5, 5-3, 5-6, 5-9, and 6 feet. Our paddles are of the most approved shapes designed to produce the greatest speed with the least effort, but if other shapes are desired we will be glad to furnish them.

**LETTERING.**— Any desired lettering can be furnished on our canoes at reasonable prices. A two-inch gold letter, double shaded with red, makes a very pretty lettering, and will be put on any canoe for ten cents per letter.

**STRIPING and MONOGRAMS.**— Our charges for special stripes and monograms on canoes depends upon the amount of work necessary, but will in all cases be reasonable.

**PRICES.**— The prices quoted in the pages of our catalog are strictly net, and are as low as it is possible for us to make them and guarantee an absolutely first-class product, and we will under no circumstances manufacture an inferior craft of any description. We want your business, and to obtain it we give the lowest prices consistent with the production of craft that will merit the unqualified approval of every purchaser.

**DELIVERIES.**— We intend to carry a stock of canoes at all times so that we can make prompt deliveries of any length and model in our types A, 2A, and 3A in our stock colors. The longer decks in our other types can be furnished on short notice. Outside stems, keels, open gunwales, sponsons, and lettering and striping of course require extra time, but these things will have prompt attention and deliveries made at the earliest possible moment.

**TERMS.**— Our terms are net cash with order, F. O. B., Waterville, or we will ship C. O. D., or draft with bill of lading if 25 per cent of the amount is sent with the order. Any special work ordered must be accompanied by 25 per cent of the approximate cost of the work.

**PACKING.**— No charge is made for packing our canoes in straw and burlap for delivery. If a crate is desired the charge will be \$1.75 extra.

**TYPES.**— In ordering canoes we would suggest that you order by the model, length, and type number when possible. A description of the various types is here given.

**TYPE A.**— Ash or maple 15 inch decks, spruce wales, ash or maple seats and thwarts.

**TYPE 2A.**— Mahogany 15 inch decks, mahogany wales, seats, and thwarts. Either a keel or bottom rack will be furnished with this type without extra charge.

TYPE 3A.— Mahogany 24 inch decks, mahogany wales, seats, and thwarts. Keel, bottom rack, and outside stems, if desired, will be furnished without extra charge.

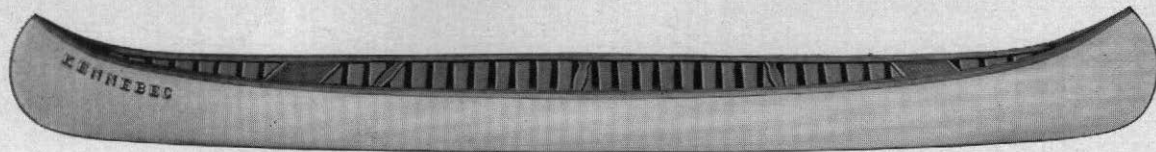
TYPE 4A.— Mahogany 30 inch decks, mahogany wales, seats, and thwarts. Keel, bottom rack, and outside stems, if desired, will be furnished without extra charge.

TYPE 5A.— Mahogany 36 inch decks, mahogany wales, seats, and thwarts. Keel, bottom rack, and outside stems, if desired, will be furnished without extra charge.

TYPE 6A.— Mahogany 48 inch decks, mahogany wales, seats, and thwarts. Keel, bottom rack, and outside stems, if desired, will be furnished without extra charge.

Our Maine Guides' canoe is made only in type A with 15 inch cedar decks, unless specially ordered, in place of maple or ash decks. This model will be furnished in slate or drab color unless some other color is ordered.





## KENNEBEC MODEL, 17 FEET

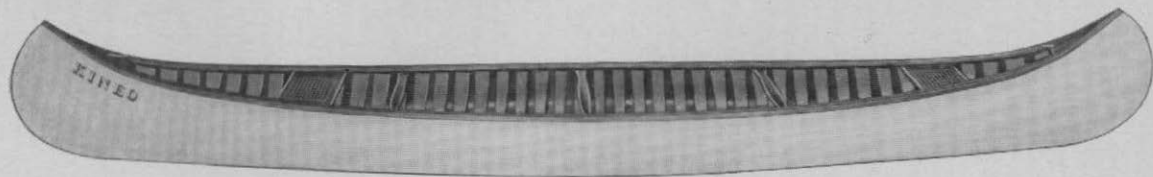
We carry a stock of these canoes in 16, 17, and 18 ft. lengths, and colors, light and dark red, brilliant, light, medium, and dark green, gray, and dark blue. There are two thwarts in the 16 ft., and three in the 17 and 18 ft. lengths, unless otherwise ordered.

### DIMENSIONS AND PRICES

Length feet	Width inches	Depth inches	Weight pounds	Type A	Type 2A	Type 3A	Type 4A	Type 5A	Type 6A
15	30½	12½	58 to 62	\$29.00	\$36.00	\$41.00	\$46.00	\$49.00	\$55.00
16	31	12½	63 to 67	30.00	37.00	42.00	47.00	50.00	56.00
17	31½	12½	68 to 72	31.50	38.50	43.50	48.50	51.50	57.50
18	32	12½	73 to 77	33.00	40.00	45.00	50.00	53.00	59.00

## KENNEBEC MODEL

To meet the demands of customers who desire a canoe especially adapted for use on the rivers and streams of this country, we have designed our KENNEBEC model, which we believe to be unsurpassed by any made to-day. This canoe, with its bottom only slightly rounded, sits lightly on the water, yet with any load, from the lightest to the heaviest, it is very firm and stanch, and is more seaworthy than many boats of much greater weight and beam. This canoe is not only adapted for canoeing on rivers and streams, but it is so strong and seaworthy, yet light and bouyant, that it is a splendid canoe for use on lakes and in making long trips where many varying conditions are encountered and long carries necessary. The location of the bilge in our KENNEBEC model not only adds to the stability of the canoe, but also gives it a very graceful appearance. We believe there is no canoe on the market to-day that combines so many excellent qualities in one craft as our KENNEBEC model.



### KINEO MODEL, 18 FEET

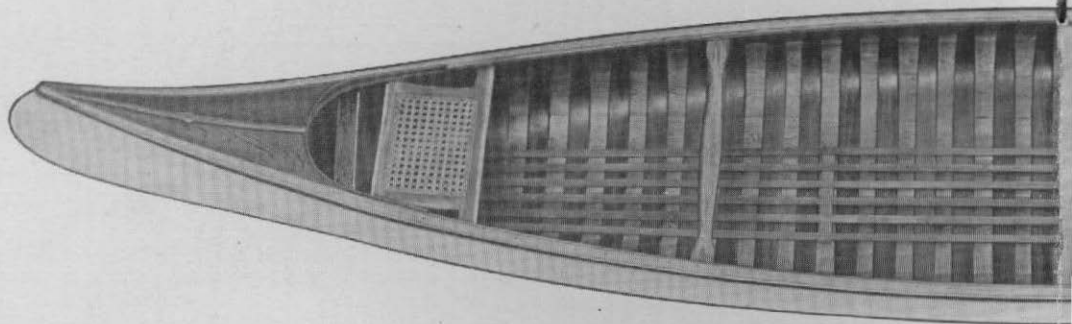
These canoes are carried in stock in 16, 17, and 18 ft. lengths, and colors light and dark red, brilliant, light, medium, and dark green, gray, and dark blue. There are two thwarts in the 16 ft., and three in the 17 and 18 ft. lengths, unless otherwise ordered.

### DIMENSIONS AND PRICES

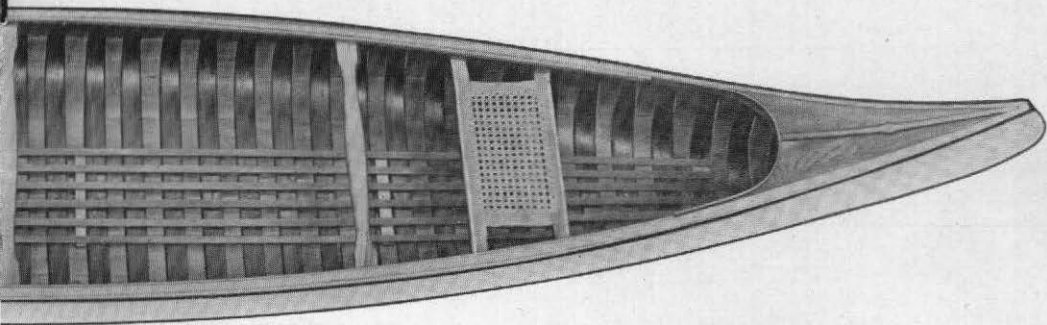
Length feet	Width inches	Depth inches	Weight pounds	Type A	Type 2A	Type 3A	Type 4A	Type 5A	Type 6A
15	33	13	60 to 64	\$30.00	\$37.00	\$42.00	\$47.00	\$50.00	\$56.00
16	33½	13	65 to 69	31.00	38.00	43.00	48.00	51.00	57.00
17	34	13	70 to 74	32.50	39.50	44.50	49.50	52.50	58.50
18	35	13	75 to 79	34.00	41.00	46.00	51.00	54.00	60.00

## KINEO MODEL

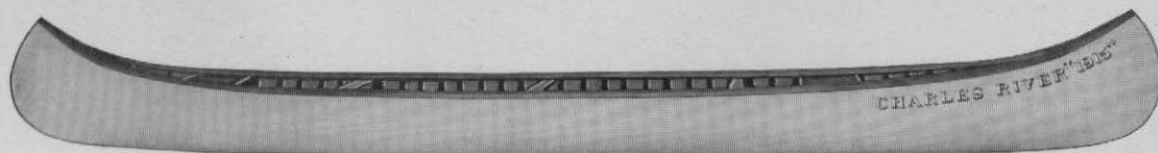
For use in lake waters where breadth of beam and depth of the craft are important factors to be considered, we have designed our Kineo model, which combines to a remarkable degree the essential features of seaworthiness and easy action, together with graceful lines that are pleasing to the eye. This is one of the strongest canoes we make, and is capable of carrying a great deal of weight, and in the hands of experienced canoeists, trips can be taken through very rough water with perfect safety. This canoe is also well adapted to use on small streams and rivers where it is desirable to use a canoe of greater breadth of beam than our Kennebec model. For the use of cottage owners on the shores of lakes who desire an easy paddling canoe, and one that at the same time gives the greatest possible safety, we know of no canoe that can possibly give better satisfaction than our Kineo model. By paying careful attention to the selection of the materials used in the construction of this canoe we are able to give the maximum of strength with the minimum of weight.



CHARLES RIVER "1915" MO



MODEL, 17 ft. with 24 in. Decks



### CHARLES RIVER "1915" MODEL, 17 FEET

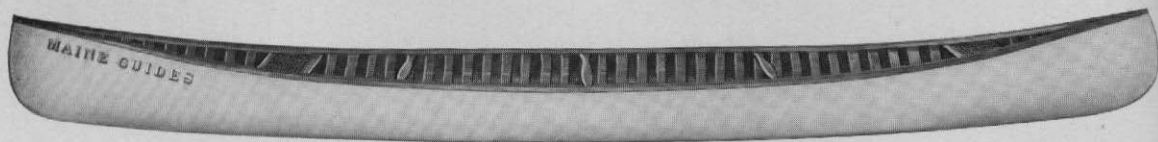
These canoes are carried in stock in 16, 17, and 18 ft. length, and colors light and dark red, brilliant, light, medium, and dark green, gray, and dark blue. There are two thwarts in the 16 ft., and three in the 17 and 18 ft. lengths, unless otherwise ordered.

#### DIMENSIONS AND PRICES

Length feet	Width inches	Depth inches	Weight pounds	Type A	Type 2A	Type 3A	Type 4A	Type 5A	Type 6A
15	31	12	58 to 62	\$30.00	\$37.00	\$42.00	\$47.00	\$50.00	\$56.00
16	31½	12	63 to 67	31.00	38.00	43.00	48.00	51.00	57.00
17	32	12	68 to 72	32.50	39.50	44.50	49.50	52.50	58.50
8	32½	12	73 to 77	34.00	41.00	46.00	51.00	54.00	60.00

## CHARLES RIVER "1915" MODEL

It is not our purpose here to go into a minute description of all the splendid features of our CHARLES RIVER "1915" Model canoe, or all the minute details of its thorough construction and graceful appearance. These are things that no pen picture can accurately and fully describe, and only a personal examination of this beautiful craft will enable any one to appreciate its many excellent qualities. Our CHARLES RIVER "1915" Model is specially designed and adapted for use on the Charles River, and small rivers and lakes in the vicinity of Boston. Special attention has been paid to the details of its construction, so that it possesses great strength and rigidity, and yet has a most graceful appearance. The bilge on this canoe is so located that the canoe is very firm and steady, drawing comparatively little water, yet giving a quick and easy response to the paddle. Its high, curved stems and graceful lines make a canoe to be admired by the most critical canoe connoisseur.



### MAINE GUIDES' MODEL, 18½ FEET

We carry these canoes in stock in 18½ and 20 ft. lengths, and unless otherwise specified are furnished in drab or slate color. A cut showing the construction of the short ribs used in our MAINE GUIDES' model will be found on page 18.

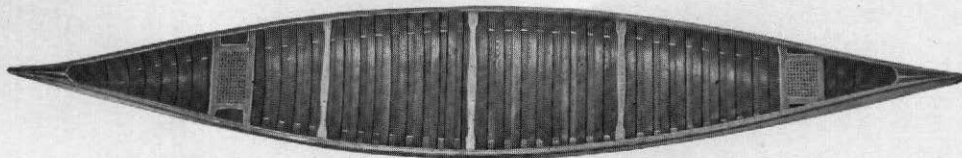
#### PRICES AND DIMENSIONS

Length feet	Width inches	Depth inches	Weight pounds	Price
18½	35½	13	78 to 81	\$29.50
20	37	13	88 to 91	34.50

Fifteen-inch cedar decks are used in these canoes, but ash or maple will be substituted for fifty cents extra, if desired. We furnish one or two seats, and one, two, or three thwarts as wanted, without extra charge. One seat and two thwarts will be furnished unless otherwise specified.

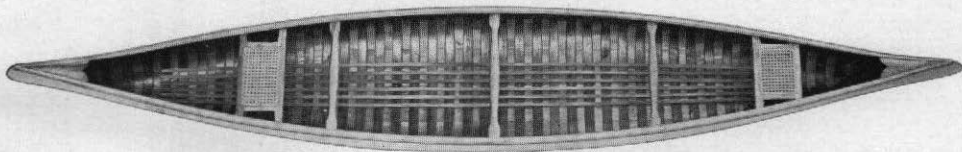
## MAINE GUIDES' MODEL

Realizing fully that there is no more critical and exacting class of canoeists in the country than the experienced guide, we have spared no pains or money to produce a canoe that will satisfy his requirements in every possible way, and in our MAINE GUIDES' Model we believe we have accomplished this desired result in the most satisfactory manner. By carefully examining and purchasing the very best quality of Maine cedar, we are enabled to produce a canoe of great strength, and at the same time give the least possible weight. On this canoe we use an extra heavy weight cotton duck, capable of standing great strain, which reduces the possibility of puncturing or cutting the covering to a minimum. The style of short ribs used in the construction of this canoe is a distinct innovation, and one which is being hailed with delight by the guides. Instead of the short ribs being narrow, as in most guides' canoes, those used in our MAINE GUIDES' Model are wide enough to fill the whole spaces between the long ribs, giving the canoe practically a double bottom, and insuring the greatest possible protection to the planking. This canoe draws very little water, is capable of carrying heavy loads, and is very stanch and seaworthy. While we give the lowest possible price on this model canoe, we use the same care in the construction of our MAINE GUIDES' that we do with our other models.



### INSIDE MAINE GUIDES' 18½ FT. CANOE

Showing the interior of our MAINE GUIDES' Model. Note the short ribs.

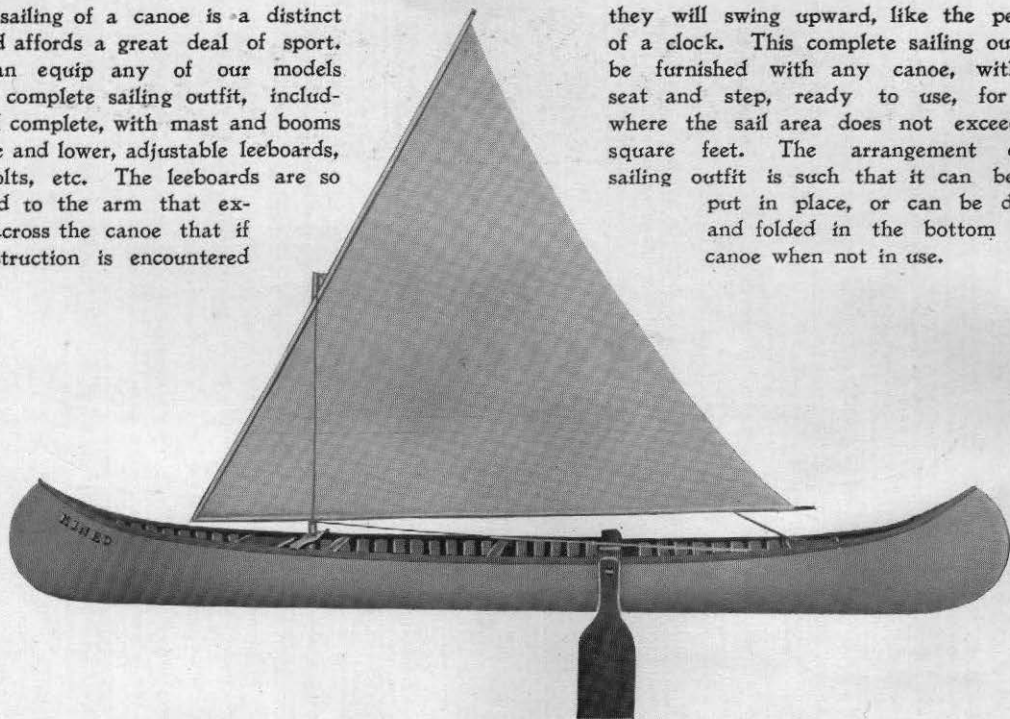


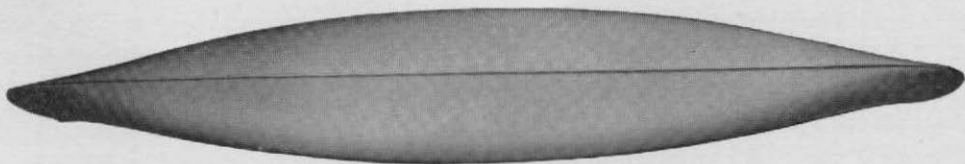
### INSIDE KENNEBEC 17 FT. CANOE

Showing the inside of a 17 ft. KENNEBEC Model, with 15 inch decks and bottom rack.

The sailing of a canoe is a distinct art and affords a great deal of sport. We can equip any of our models with a complete sailing outfit, including sail complete, with mast and booms to raise and lower, adjustable leeboards, grip bolts, etc. The leeboards are so fastened to the arm that extends across the canoe that if an obstruction is encountered

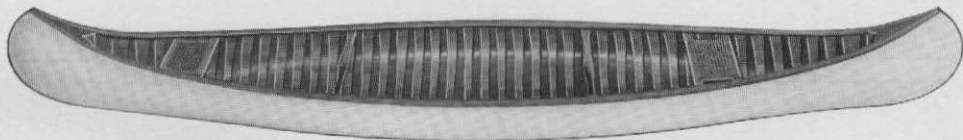
they will swing upward, like the pendulum of a clock. This complete sailing outfit will be furnished with any canoe, with mast seat and step, ready to use, for \$8.00, where the sail area does not exceed fifty square feet. The arrangement of this sailing outfit is such that it can be easily put in place, or can be detached and folded in the bottom of the canoe when not in use.





17 FT. CHARLES RIVER "1915" MODEL

Showing the bottom of a 17 ft. CHARLES RIVER "1915" canoe with keel.



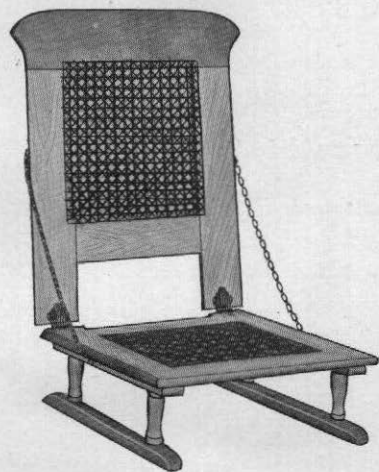
16 FT. CHARLES RIVER "1915" MODEL

Showing inside and location of thwarts in 16 ft. CHARLES RIVER "1915" canoe.

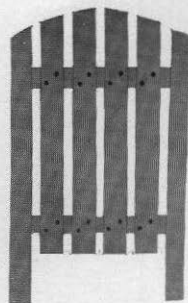
## PRICE LIST OF CANOE SUPPLIES

On the two pages following we show you cuts of our chairs, back rests, carrying yokes, and single and double blade paddles. Following are the prices of these, and other supplies for paddling and rowing canoes:

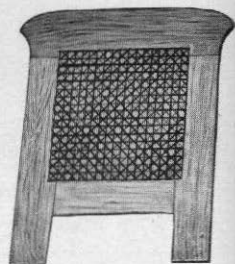
Back Rest, Style A, ash or maple . . . . .	\$1.25	Oars, straight or spoon blades, leathered, copper tipped, per pair . . . . .	\$3.25
Back Rest, Style A, mahogany . . . . .	1.50	Paddles, single, ash, maple, or spruce, No. 1 . . .	1.50
Back Rest, Style B, caned, ash or maple . . .	1.75	Paddles, single, ash, maple, or spruce, No. 2 . . .	1.25
Back Rest, Style B, caned, mahogany . . . .	2.00	Paddles, single, ash, maple, or spruce, No. 3 . . .	1.00
Bottom Rack . . . . .	1.00	Paddles, single, bird's eye maple, selected, 2.50 to 5.00	
Carrying Yoke, adjustable . . . . .	2.00	Paddles, double, ash, maple, or spruce, No. 1 . . .	3.50
Carpet to cover bottom of canoe, per yard . . .	1.00	Paddles, double, ash, maple, or spruce, No. 2 . . .	3.00
Canvas Covering for Canoe . . . . .	5.00	Rowlocks, polished brass, with block, pair . . .	2.25
Chair, Folding Back, caned, ash or maple . . .	2.50	Sailing outfit, complete . . . . .	8.00
Chair, Folding Back, caned, mahogany . . . .	2.75	Sponsons, on any canoe . . . . .	11.50
Chair, same, without legs, ash or maple . . . .	2.00	Keel, on Types A and 2A . . . . .	1.00
Chair, same, without legs, mahogany . . . . .	2.25	Outside Stems, oak, on Types A and 2A . . . .	1.75
Flag Pole Socket, special . . . . .	.35		



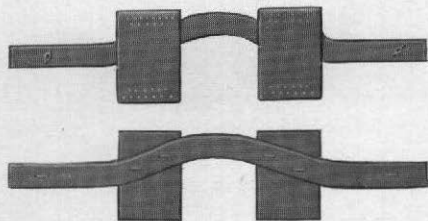
CHAIR



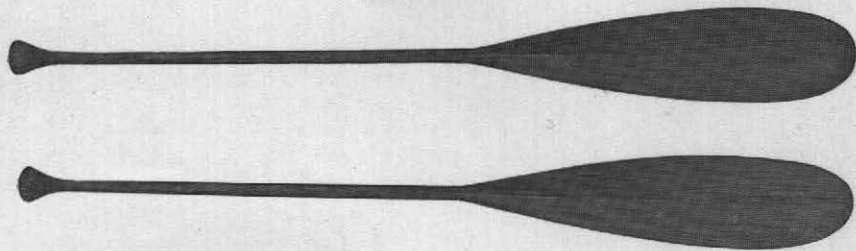
BACK REST, STYLE A



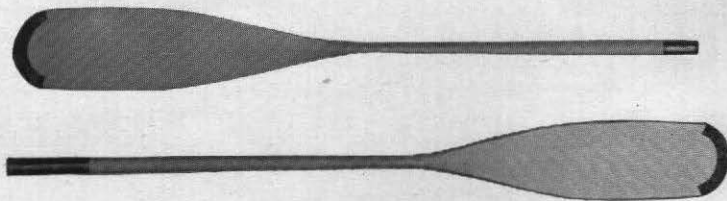
BACK REST, STYLE B



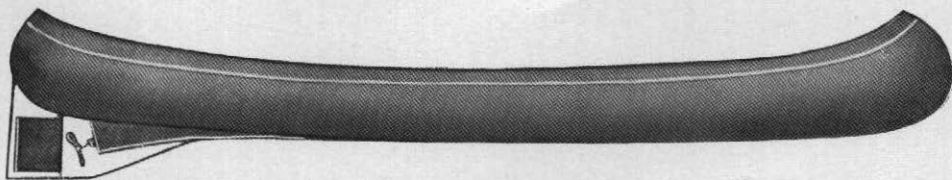
CARRYING YOKE



SINGLE BLADE PADDLES



DOUBLE BLADE PADDLES



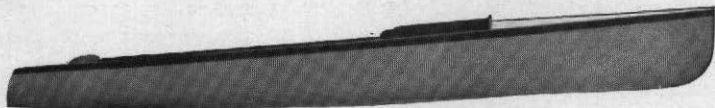
### 18 FT. KENNEBEC MOTOR CANOE

For use as a pleasure craft the canvas-covered canoe has attained a great popularity, and in order to combine the pleasures of a canoe with the speed of a motor boat, we have designed a motor canoe that gives splendid satisfaction. This motor canoe is constructed in the same manner as our paddling canoes, except that the ribs are made heavier and the planking thicker to give greater strength to the craft. The design of our KENNEBEC motor canoe is along similar lines to our Kineo model canoe, which has high and beautifully curved stems, and is built of a width and depth to enable it to carry comfortably and safely four persons of average weight in addition to the regular motor equipment. Our motor canoe is a trifle over 18 feet in length, 35½ inches wide in the center, and varying in depth from 13½ inches amidships to 27 inches at the stems. This canoe is carefully constructed with a view to giving it all the necessary strength, and while light in weight, yet with the motor we install, it runs steadily and easily in the water. The ribs and planking, and in fact all the materials used in the construction of our motor canoes are carefully selected. After it is planked the hull is thoroughly oiled inside and outside, and a special heavy grade of cotton duck tightly stretched over the planking. This canvas is filled and painted in much the same manner as our canoes, and is very durable. The interior of the canoe is finished nicely in natural wood. The decks are of mahogany and highly polished, as are also the wales, which are made of the same material. If a combing around the top of the wales is desired it will be furnished for \$5 additional.

In order to afford the fullest protection to the bottom of the motor canoe, we use a specially designed double keel, which is in reality two keels, running the whole length of the canoe under water. These keels are about six inches apart, narrow at the bow, and gradually widening towards the stern, where they are about  $3\frac{1}{2}$  inches deep. These keels not only protect the bottom of the canoe, but they serve to make it very steady, and prevent any drifting when a wind is blowing from either side. The stems of this canoe are fully protected with bang plates of polished brass. The equipment of our motor canoe includes a motor (complete) of standard make, thoroughly tested and reliable, and constructed specially for use in a light craft; also a nicely finished steering wheel of wood and brass, steering lines so arranged that they cannot easily be fouled, propeller, rudder gasolene tank, and in fact everything necessary, down to a polished brass flagpole socket. We also equip these canoes with sponsons so constructed as to present a very neat appearance and render the boat unsinkable. These will be furnished at an additional cost of \$15. The prices we get for our motor canoes are very low when the actual cost of manufacturing is considered.

#### DIMENSIONS AND PRICES

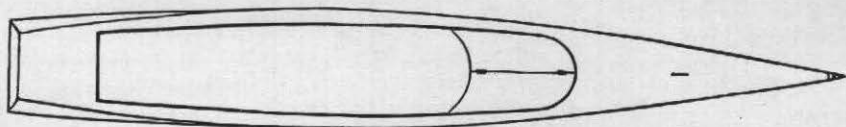
Length	Depth	Width	H.P.	Price	With Sponsons	With Sponsons and Combing
18	$13\frac{1}{2}$	$35\frac{1}{2}$	$1\frac{1}{2}$	\$150.00	\$165.00	\$170.00
18	$13\frac{1}{2}$	$35\frac{1}{2}$	2	160.00	175.00	180.00



## KENNEBEC MOTOR SPEED BOAT

Recognizing the ever-increasing demand for a canvas-covered speed boat, the Kennebec Boat & Canoe Co. is producing a boat that is not only capable of developing a high rate of speed, but is staunch and seaworthy as well. In the construction of our canvas-covered speed boat the greatest care is exercised in the selection and preparation of the stock, and the whole process of construction from beginning to end is unceasingly watched so that the highest degree of perfection may be attained. The KENNEBEC speed boat is 25 feet in length and 33 inches beam. The depth varies from 25 inches in the bow to 15 inches in the stern, and the design of the whole model is such that the greatest possible speed is developed with the least amount of power. A good six horsepower motor will develop in this boat a speed of about fifteen miles per hour, and if greater speed is desired, a much larger motor can be used with perfect safety, for the boat is so strongly constructed that no amount of vibration can loosen any of its parts, or cause it to leak. When used with a six horsepower motor the vibration is so small that it can be scarcely detected.

The ribs and planking in our motor speed boats are of the best quality Maine cedar. The planking is thicker than that used on canoes, and the ribs are heavier and set closer together. The bottom of this speed boat is very flat, so that it draws very little water. On this speed boat, as on our motor canoes, we use our special double keel, that is, two keels running nearly the whole length of the boat. The wales and the long deck in the bow of our speed boat are of mahogany, beautifully finished, and with the interior of the boat finished in natural wood, and the beautiful color and finish on the canvas covering, this boat is undeniably handsome. The canvas used on this boat is of extra heavy weight, and made especially for this purpose, and the greatest care is used in filling and painting, so as to give the canvas great strength and durability. We shall be glad to quote a price on our speed boat to any one interested, and will make it as low as is possible consistent with the high quality of our production.



LINE OF KENNEBEC MOTOR SPEED BOAT

## KENNEBEC BOATS

In the preceding pages of our catalog we have endeavored to give you by description and illustration a thorough understanding of the canvas-covered craft which we manufacture; now we want to say here just a word about boats, which is a distinct feature of our business, and one which, for catalog purposes, is difficult to treat in a comprehensive manner. The four models of canoes we produce are especially adapted to the different conditions under which they may be used, but to prepare a line of larger boats so complete that at least one would embody the ideas of every prospective purchaser would require a great many styles and sizes, and almost unlimited capital and space. We therefore believe it better to simply state here that we are prepared to make almost anything in the line of rowing or power boats up to forty feet in length, and in making these we will use our own plans and designs, or we will carefully carry out the plans of our customers. We believe that this method is on the whole the most satisfactory, but we intend to keep on hand a number of boats of different designs and lengths in order to make quick delivery, should a customer desire one for immediate use. Our boats are all carefully and skilfully made, and only the highest grade of materials used in their construction, while our prices are as low as it is possible to make them and maintain the high standard of our product.

Kentzlee  
BOAT and CANOE CO.



WATERVILLE  
MAINE